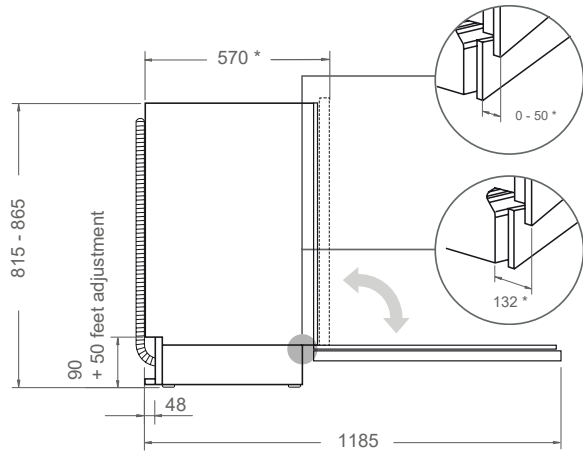
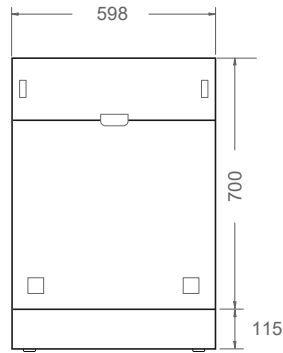


PRODUCT DIMENSIONS

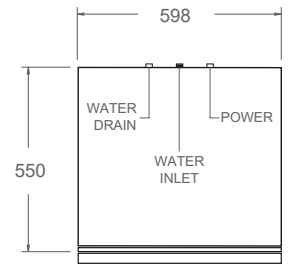
SIDE VIEW



FRONT VIEW



TOP VIEW

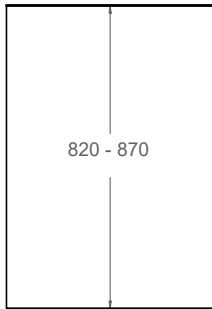


Drain hose is provided with the unit.

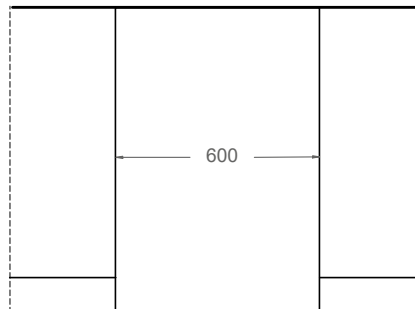
* Including a 20 thick kitchen cabinet front panel. A minimum space of 3 is required between the plinth and the panel.

CUTOUT DIMENSIONS

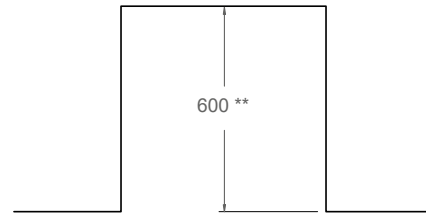
SIDE VIEW



FRONT VIEW



TOP VIEW



** For a flush installation, a minimum inset depth of 580 is required.

ELECTRICAL & WATER CONNECTION

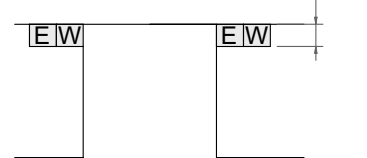
E

A properly-grounded, horizontally-mounted electrical receptacle should be installed according to this drawing.

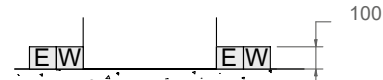
W

To connect the water mains to the water inlet valve thread, use the 3/4" threaded connector and 1500 water inlet hose (supplied).

TOP VIEW

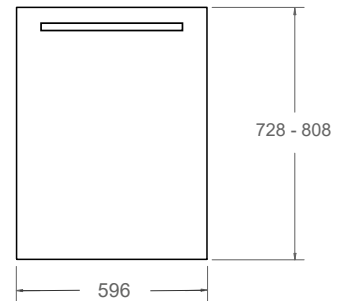


FRONT VIEW



Connections placement must be located on either side of the cutout.

CUSTOM PANEL & BASEBOARD



Custom panel weight must be within the range of 5 kg and 11 kg. Suggested panel thickness is 20. The height of a custom plinth must be within the range of 0 - 80. Max height can be increased by an additional 50 if feet are raised.

INSTALLATION REQUIREMENTS

Follow local codes & ordinances for drain requirements. Install a 300-1000 high drain loop to prevent backflow. Drain hose is 1800 long. Items will not wash properly if an extension drain hose longer than 4 m is used.

Dimensions are in millimeters unless otherwise specified.